



SKYMAX 50 (ST50-6) E4 VEHICLE PARTS PRICE LIST



ST50-6 E4

No.	Part number	Part name(ENGLISH)	Part name(CHINESE)	QTY. on each bike	REMARK
-----	-------------	--------------------	--------------------	-------------------	--------

发动机部分: ENGINE



1	11000-15A01	50cc Engine	50发动机	1	
2	11001-14A00	Left Side Cover, Engine	左后边盖	1	
3	26300-17K00	Kick Starter	启动杆	1	
3.1	GB/T 5783 M6X20-Zn	Bolt	M6x20六角螺栓	1	
4	25600-18H00	Shift Pedal Assy	变档杆总成	1	
5	GB/T 16674 M6X28-Zn	Bolt	M6x28法兰螺栓	2	
6	GB/T70.1 M6X20-Zn.DJ	Bolt	M6X20内六角圆柱头螺钉	1	

电喷系统: FUEL INJECTION SYSTEM



1	11011-14A00-L	Intake Manifold	进气管	1	
2	81115-27A00	Bolt	M6X25防拆螺栓	2	
3	33920-15A00	Fuel Injector	喷油器	1	
4	33921-16H00	Oil Nozzle	油嘴帽	1	
5	33922-15A00	Pressing Plate,Oil Nozzle	油嘴压板	1	
6	GB/T70.1 M5X12-304	M5X12 Bolt	M5x12内六角圆柱头螺钉	1	
7	33910-15A10-L	ECU	ECU	1	
7,1	33313-16H00	Plug, ECU	ECU堵头	1	
8	GB70.2-2000 M5X12-304	M5X12 Bolt	M5X12内六角盘头螺栓	4	
9	13510-15A10	Throttle Valve	节气阀体	1	
10	13520-15A00	Throttle Valve Cap	节气门体盖	1	
11	13530-15A00	Connecting Pipe/Clip, Pipe Inlet	进气管连接管/卡箍	1	
12	44420-17H10	Quick Fuel Hose	快接油管	1	
13	33940-16H00-L	Electromagnetic Plunger Pump	电磁油泵	1	
14	41129-17H10	Electromagnetic Pump Holder	电磁油泵支架	1	
15	GB/T16674 M6X16-Zn.DJ	M6X16 Bolt	M6x16法兰螺栓	2	
16	44127-22H00	Vacuum Fuel Pump	负压油泵	1	
17	44400-15A00	Oil Filter	油滤	1	
18	44401-17H00	Holder, Oil Filter	油滤支架	1	
19	36611-16H00	ECU Connection Line 1	ECU连接线1	1	
20	36612-16H10	ECU Connection Line 2	ECU连接线2	1	
21	33930-16H00	Lambda Sensor	氧传感器	1	
22	33931-16H00	Plug in Unit Holder,Lambda Sensor	氧传感器插件支架	1	
23	33400-16H00	Ignition Coil	高压包	1	
24	GB/T70.1 M5X16-Zn.DJ	M5X16 Bolt	M5X16内六角圆柱头螺钉	2	
25	GB/T 6177 .1 M5-304	M5 Flange Nut	M5法兰防滑螺母	2	
26	33510-17H00	Bracket, Ignition Mode	点火模块支架	1	
27	GB/T 6177 .1 M6-Zn.DJ	M6 Nut	M6法兰防滑螺母	1	



28	33911-16H00	OBD connection line	OBD连接线	1	
29	33990-16H00	Diagnostic instrument	故障诊断仪	1	
30	33912-16H00	OBD Bluetooth adapter	OBD蓝牙适配器	1	

车架: FRAME



1	41100-14A30	Frame Comp	大车架	1	5.5L
2	09111-10W00	M8x136 Bolt	M8x136吊发轴	1	
3	09112-14A10	M8x125 Bolt	M8x125吊发轴	1	
4	GB/T 6187.1 M8-Zn.DJ	M8 Flange Nut	M8法兰自锁螺母	2	
5	41211-14A00	Decoration Strip	车架装饰条	1	
6	41212-14A00	Clip, Decoration Strip	装饰条线卡	3	

单撑、双撑: SIDE STAND & CENTER STAND



1	42310-14A10	Side Stand	单撑组件	1	
2	42312-Z1000	Outer Spring, Side Stand	单撑外弹簧	1	
3	42232-14A00	Inner Spring, Side Stand	单撑内弹簧	1	
4	42311-23H00	Bolt, Side Stand	单撑螺栓	1	
5	42313-Y1000	Switch, Side Stand	单撑熄火开关	1	
6	GB/T16674 M6X16-Zn.DJ	M6X16 Flange Bolt	M6X16法兰螺栓	1	
7	42100-14A10	Center Stand	中撑	1	
8	42211-14A00	Shaft, Center Stand	中撑轴	1	
9	GB/T 97.1 16-Zn.DJ	Washer	平垫圈	1	
10	GB/T 91 3.2X25-Zn.DJ	Cotter Pin	开口销	1	
11	42312-Z1000	Outer Spring, Side Stand (used for center stand)	中撑外弹簧	1	
12	42232-14A00	Inner Spring	中撑内弹簧	1	
13	42222-14A00	Cushion, Stand Center	中撑缓冲垫	1	

前后搁脚部分: FRONT FOOTREST&REAR FOOTREST



1	43510-14A10	Front Footrest Assy	前脚踏支架组件	1	
1.1	43511-Z1000	Rubber, Front Footrest	前脚踏皮	2	
2	GB/T16674 M8X16-Zn.DJ	Bolt	M8X16法兰螺栓	4	
3	43620-14A00	Rear Footrest, Left	后脚踏组件	2	
4	GB/T16674 M10X20X1.25-S14-Zn.DJ	Bolt	M10X20法兰螺栓	2	
5	GB/T 97.1 10-Zn.DJ	Spring Washer	φ10平垫圈	2	

电器部分: ELECTRICAL COMPONENTS



1	36610-14A01	Wire Harness	导线束	1	
2	36621-15A00	Wire Harness Cushion Ring	导线束护圈	1	
3	32800-16H00	Rectifier Assy	稳压器	1	
4	31800-Y1000	Start Relay	启动继电器	1	
5	31810-17H00	Bracket, Start Relay	启动继电器支架	1	
6	38500-14A00	Horn Assy	喇叭	1	Φ6 HOLE
7	38620-23H00	Flash Relay	闪光灯 (LED)	1	STANDARD
	38620-Y1001		闪光器	1	OPTIONAL
8	35610-27A00	Bracket, Flash Relay	闪光器支架	1	
9	33610-14A00	Battery 12V4AH	蓄电池12V4AH	1	
10	41510-17H10	Holder, Battery	蓄电池支架	1	
11	41522-14A10	Band, Battery	蓄电池攀带	1	
12	37000-14A00	Lock Assy	套锁总成	1	
13	37750-Z1000	Brake Switch, Rear	后刹开关	1	
14	37741-15A00	Spring, Rear Brake Switch	后刹车开关弹簧	1	
15	GB/T16674 M6X12-Zn.DJ	M6X12 Flange Bolt	M6X12法兰螺栓	3	
16	GB 819.1 M6X12-Zn.DJ	Screw	十字槽沉头螺钉	2	
17	GB/T70.1 M6X25-Zn.DJ	M6X25 Screw	M6X25内六角圆柱头螺钉	2	

仪表和灯具 :SPEEDOMETER & LAMPS



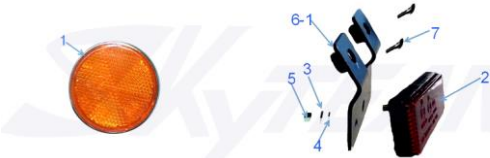
1	35100-17H00	Headlamp Assy (with LED DRL)	自行车前大灯	1	STANDARD
1.1	35112-14A00	Ring, Headlamp Lens	大灯圈	1	
1.2	35115-29A00	Bulb, Headlamp	H4大灯泡	1	
1.3	37910-17H00	Controller,Daytime Running Light	LED控制器	1	
2	GB/T 820 M5X16-Zn.DJ	Screw	十字槽半沉头螺钉	3	OPTIONAL, SAME AS E2
3	37920-17H00	Controller, Automatic Headlamp	大灯自启控制器	1	
4	35100-14A00	Headlamp Assy	前大灯	1	
4.1	35107-Y1000	Bulb, Headlamp	大灯泡	1	
4.2	35106-Y1000	Bulb, position	位置灯泡	1	



1	34100-17H02	LCD Speedometer Assy	液晶仪表	1	
1.1	34112-17H02	Plastic Ring, Speedometer	仪表外圈	1	
1.2	34113-17H02	Glass Plate, Speedometer	里程表玻璃面板	1	cannot supply separately
1.3	34115-14G00	Rubber ring, Speedometer	仪表橡胶圈	1	cannot supply separately
2	54600-14A01	Inductance Gear Box Assy, Speedometer	电感计速器	1	
3	34811-10W00	Spring, Speedometer	仪表拉簧	1	
4	35121-14A10	Housing, Headlamp	大灯灯壳	1	
5	35122-14A00	Cushion	大灯罩缓冲垫	2	
6	GB/T 70.2 M8X20-304	M8X20 Flange Bolt	M8X20内六角螺栓	2	
7	GB/T 6170 M8-Zn,DJ-S14	M8 Nut	M8六角螺母	2	



1	46710-14A00	Bracket, Head Lamp	前大灯支架	1	
2	46705-14A00	Rubber	大灯支架T形橡胶套	2	
3	34120-10A00	Rubber Ring	缓冲胶圈	2	
4	44415-15A00	Bushing	衬套	2	
5	51511-14A00	Decorative Plate	商标装饰牌	1	
6	GB/T16674 M6X25-A2-70-304	Flange Bolt	M6X25法兰螺栓	2	
7	46720-10A00	Mounting Plate, Lower	支架下安装板	1	
8	GB/T16674 M6X35-Zn,DJ	Bolt	M6X35法兰螺栓	2	
9	35210-17H30	Signal Lamp Assy, Front, Lh	左转向灯	2	
10	35310-17H30	Signal Lamp Assy, Front, Rh	右转向灯	2	
11	GB/T 6177.1 M10X1.25-S14-Zn,DJ	M10 Nut	M10法兰防滑螺母	4	
13	35710-Y1000	Tail Lamp Assy (Ellipse)	尾灯总成	1	
13.1	35711-Y1000	Bulb, Tail Lamp	尾灯灯泡	1	
14	GB/T 97.1 6-Zn,DJ	Washer	φ6平垫圈	2	
15	GB/T 6170 M6-Zn,DJ	Nut	M6六角螺母	2	



1	38110-Y1010	Side Reflector	前反射器(E)	2	
2	38160-Y1000	Rear Reflector	后反射器(E)	1	
3	GB/T 96 5-Zn,DJ	Washer	φ5大垫圈	1	
4	GB/T 93 5-Zn,DJ	Spring Washer	φ5弹垫圈	1	
5	GB/T 6170 M5-Zn,DJ	Nut	M5六角螺母	1	
6-1	38162-17H00	Bracket, Rear Reflector	后反射器支架	1	
7	47131-10H00	Screw	M6X16内六角盘头螺钉	2	

手把开关: HANDLE SWITCHES



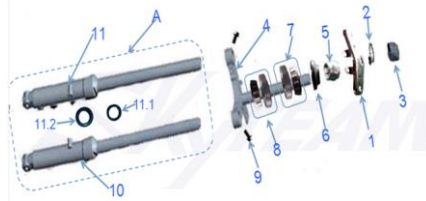
1	57600-17H20-0AD	Left Handle Switch	左手把开关	1	FOR FRONT LAMP WITH LED DRL
1-1	57600-15A10-0AD		左手把开关	1	FOR NORMAL FRONT LAMP
1.1	57511-Z1000	Lever, Clutch	离合器手柄 (本色)	1	
1.2	57513-Z1000	Bolt, Clutch Lever	离合器手柄螺栓	1	
2	57300-21G00-010	Right Handle Switch Assy	右手把开关总成	1	
2.1	57310-21G00-010	Right Handle Switch	右手把开关	1	
2.2	57320-Z1010	Grip, Throttle	油门胶套	1	
3	57210-Z1000	Grip, Lh	左把套	1	

方向把: HANDLE BAR



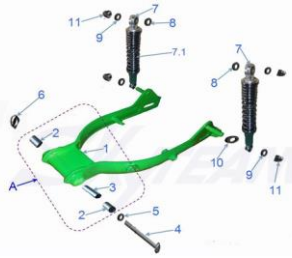
1	56110-15A00	Handlebar, Lh	左方向把	1	
2	56120-15A00	Handlebar, Rh	右方向把	1	
3	56140-15A00	Holder, Handle Bar	方向把座	1	
4	56130-15A00	Lock, Handlebar	方向把锁紧手柄	2	
5	56141-15A00	Spring	弹簧	2	
6	GB/T 6187.2 M10X1.25-Zn.DJ	M10x1.25 Flange Nut	M10x1.25法兰自锁螺母	2	

前叉: FRONT FORK



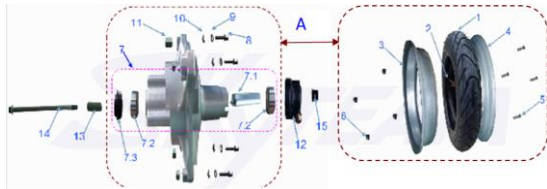
1	51310-14A00	Steering Head	上联板	1	
2	51612-Z1000-304	Washer	大垫片	1	
3	51633-Z1000	Steering Nut	方向柱顶螺母	1	
4	51410-14A10	Steering Stem	下联板组件	1	
5	51631-Z1000	Steering Nut	转向轴锁紧螺母	1	
6	51643-D0300	Dust Seal	上部转向防尘圈	1	
7	51650-Z1000	Needle Bearing, Upper	圆锥滚针轴承 (上)	1	
8	51660-Z1000	Needle Bearing, Lower	圆锥滚针轴承 (下)	1	
9	GB/T16674 M8x35-Zn.DJ	Flange Bolt	M8X30法兰螺栓	2	
A	51100-14A10	Front Shock Absorber	前左、右减震器总成	1	
10	51150-14A10	Shock Absorber, Front, Lh	左前减震器	1	
11	51160-14A10	Shock Absorber, Front, Rh	右前减震器	1	
11.1	51170-16H20	Oil Seal	前减油封	2	
11.2	51171-16H00	Seal Cap	前减防尘罩	2	

后平叉 后减震: REAR SWING ARM & REAR SHOCK ABSORBER



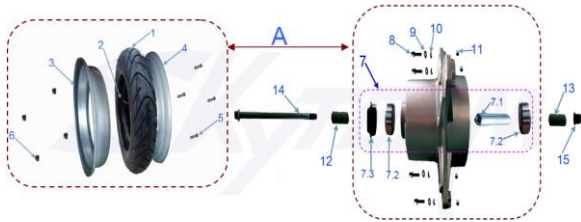
A	61000-14A00	Swing Arm Comp	后平叉组件	1	
1	61100-14A00	Swing Arm	铁后平叉	1	
2	61251-14A00	Bushing	后平叉缓冲衬套	2	
3	61276-14A00	Middle Bushing	后平叉内衬套	1	
4	61211-14A10	Axle, Swing Arm	后平叉轴	1	5.5L
5	GB/T 97.1 10-Zn.DJ	Washer	平垫圈	1	
6	GB/T 6187.2 M10X1.25-Zn.DJ	Flange Nut	M10法兰自锁螺母	1	
7	62100-14A10	Rear Shock Absorber Assy	后减震器	2	
7.1	62170-14A10	Oil Seal	后减油封	2	
8	GB/T 97 12-Zn.DJ	ø12 Washer	ø12平垫圈	2	
9	GB/T 96 10-Zn.DJ	ø10 Washer	ø10大垫圈	4	
10	61101-14A10	Spacer	过渡垫圈	1	
11	GB/T 923 M10X1.25-A2-70-304	M10 Cap Nut	M10盖形螺母	4	

前轮: FRONT WHEEL



A	55000-14A10	Front Wheel Assy	前轮总成	1	
1	55100-14A00	Tire	外胎	1	
2	55200-14A00	Tube, Inner	内胎	1	
3	54142-Z1000	Rim, Lh(3.5-10) (Color)	左轮辋	1	
4	54141-Z1000	Rim, Rh(3.5-10) (Color)	右轮辋	1	
5	GB/T16674 M6X12-Zn.DJ	M6X12 Flange Bolt	M6X12法兰螺栓	4	
6	GB/T 6187.1 M6-Zn.DJ	M6 Flange Nut	M6法兰自锁螺母	4	
7	54100-Z1000	Hub, Front Wheel	前轮毂组件	1	
7.1	54123-Z1000	Bushing	前轮中间衬套	1	
7.2	GB/T 276 6301Z	Bearing	6301Z轴承	2	
7.3	09284-Z1000	Dust Seal	前轮左密封圈	1	
8	GB/T 5783 M8X25-8.8-Zn.DJ	M8x25 Bolt	M8x25六角头螺栓	4	
9	GB/T 97.1 8-Zn.DJ	ø8 Flat Washer	ø8平垫圈	4	
10	GB/T 859 8-Zn.DJ	ø8 Spring Washer	ø8弹垫圈	4	
11	210221-Z1000	Nut	螺母	4	
13	54121-Z1000	Bush, Front Wheel, L	前轮左衬套	1	
14	54711-Z1000	Axle, Front Wheel	前轮轴	1	
15	GB/T 6187.2 M12X1.25-Zn.DJ	M12 Flange Nut	M12法兰自锁螺母	1	

后轮: REAR WHEEL



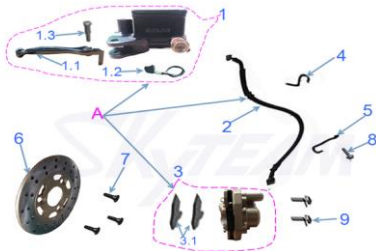
A	65000-14A10	Rear Wheel Assy(Color)	后轮总成	1	
1	55100-14A00	Tire	外胎	1	
2	55200-14A00	Tube, Inner	内胎	1	
3	54142-Z1000	Rim, Lh(3.5-10) (Color)	左轮辋	1	
4	54141-Z1000	Rim, Rh(3.5-10) (Color)	右轮辋	1	
5	GB/T16674 M6X12-Zn.DJ	M6X12 Flange Bolt	M6X12法兰螺栓	4	
6	GB/T 6187.1 M6-Zn.DJ	M6 Flange Nut	M6法兰自锁螺母	4	
7	65300-Z1010	Hub, Rear Wheel	后轮毂组件	1	
7.1	210207-Z1000	Middle Bushing	后轮中间衬套	1	
7.2	GB/T 276 6301Z	Bearing	轴承	2	
7.3	210213-Z1000	Dust Seal, Left	后轮左密封圈	1	
8	GB/T 5783 M8X25-8-8-Zn.DJ	Bolt	M8x25六角螺栓	4	
9	GB/T 97.1 8-Zn.DJ	ø8 Flat Washer	ø8平垫圈	4	
10	GB/T 859 8-Zn.DJ	ø8 Spring Washer	ø8弹垫圈	4	
11	210221-Z1000	Nut	螺母	4	
12	64121-14A00	Bush, Rear Wheel, L	后轮左衬套	1	
13	64122-14A00	Bush, Rear Wheel, R	后轮右衬套	1	
14	64711-14A00	Axle, Rear Wheel	后轮轴	1	
15	GB/T 6187.2 M12X1.25-Zn.DJ	Flange Nut	M12法兰自锁螺母	1	

传动部分: TRANSMISSION



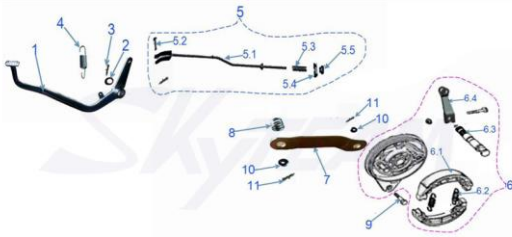
1	420MH-88	Chain 88 links	88节链条	1	
2	64511-10A00	Rear Sprocket Z42	Z42大链轮	1	
3	64512-18H00	Lock Plate, Sprocket	链轮锁片	2	
4	GB/T 5783 M10X1.25X25-9.8-Zn.DJ	M10X25 Bolt	M10X25六角螺栓	4	
5	61411-14A00	Adjuster, Chain	链条调节器	2	
6	61310-14A10	Chain Case	链罩	1	
7	53111-15A00	O-Ring	O形圈	1	
8	GB/T 96 6-Zn.DJ	ø6 Flat Washer	ø6大平垫	1	
9	GB/T16674 M6X16-Zn.DJ	M6X16 Bolt	M6X16法兰螺栓	1	

前制动系统: FRONT BRAKE SYSTEM



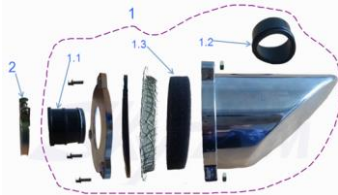
A	59000-21G00	Front Disc Brake Assy	前液压制动总成	1	
1	59008-21G00	Master Cylinder, Front Brake	前刹上泵	1	
1.1	59286-21G00	Front Brake Lever	刹车手柄	1	
1.2	59285-21G00	Brake Switch, Front	前刹开关	1	
2	59287-14A00	Front Brake Hose	前刹油管	1	
3	59007-Z1000	Caliper, Front Brake	前刹下泵	1	
3.1	59312-Z1000	Front Brake Pad	前刹摩擦片	1	
4	59489-Z1000	Clamp, Brake Hose,Upper	前碟刹上油管夹	1	
5	59242-Z1000	Clamp, Brake Hose,Lower	碟刹油下管固定夹	1	
6	59414-Z1000	Front Brake Disc	前制动盘	1	
7	58412-Z1000	Bolt	刹车盘安装螺栓	3	
8	GB/T16674 M6X12-Zn.DJ	M6X12 Flange Bolt	M6X12法兰螺栓	1	
9	GB/T16674 M8X32-9.8-Zn.DJ	M8X32 Flange Bolt	M8X32法兰螺栓	2	

后制动系统: REAR BRAKE SYSTEM



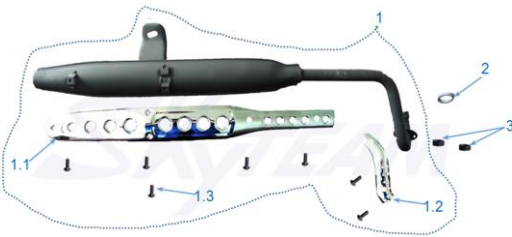
1	43110-14A10	Brake Rod Assy	后制动踏杆组件	1	
2	GB/T 97.1 16-Zn.DJ	ø16 Flat Washer	ø16 平垫圈	1	
3	GB/T 91 3.2X25-Zn.DJ	Cotter Pin	开口销	1	
4	43211-14A00	Return Spring, Rear Brake	后制动回位弹簧	1	
5	43300-14A00	Brake Rod Assy (Color)	后制动拉杆总成	1	
5.1	43311-14A00	Brake Rod (Color)	后制动拉杆	1	cannot supply separately
5.2	43312-Z1000	Pin	圆柱销	1	cannot supply separately
5.3	210401-Z1000	Spring	拉杆弹簧	1	cannot supply separately
5.4	43313-Z1000	Pin	传动销	1	cannot supply separately
5.5	43314-Z1000	Nut	制动器调节螺母	1	cannot supply separately
6	64200-14A00	Panel Comp, Rear Hub	后盖组件	1	
6.1	64202-Z1000	Rear Brake Shoe	后刹蹄块	2	
6.2	64203-Z1000	Spring	后刹蹄块弹簧	2	
6.3	64204-Z1000	Cam, Rear Brake	后制动凸轮轴	1	
6.4	64205-14A00	Lever, Rear Brake Cam	后制动摇臂	1	
7	64311-21G00	Linking Plate	后刹扭力板	1	
8	64312-14A00	Spring	弹簧	1	
9	65311-14A00	Bolt	后轮扭力杆螺栓	1	
10	GB/T 6170 M8-Zn.DJ	Nut	M8六角螺母	2	
11	GB/T 91 2X20-Zn.DJ	Cotter Pin	开口销	2	

空滤: AIR FILTER



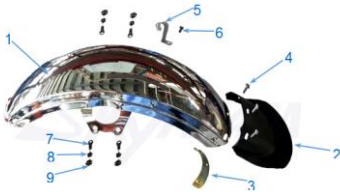
1	13700-15A01	Air Cleaner Assy	空气滤清器总成	1	
1.1	13723-16H10	Outlet Tube, Air Cleaner	空滤器连接口	1	
1.2	13727-22A00	Inlet Tube, Air Cleaner	空滤器进气口	1	
1.3	13725-16H10	Element, Air Cleaner	空滤器滤芯	1	
2	13712-Y1000	Clip	卡箍	1	

消音器: MUFFLER

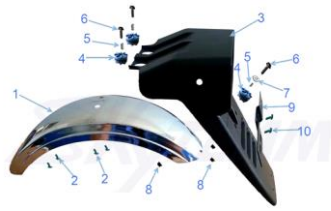


1	14300-14A40	Muffler Comp(Color)	消音器组件	1	
1.1	14321-14A10	Cover, Muffler	消音器装饰盖	1	
1.2	14311-14A10	Cover, Exhaust Pipe	排气管装饰盖	1	
1.3	GB/T 818 M6X10	Screw	十字槽盘头螺钉	7	
2	14360-Z1000	Gasket, Exhaust Pipe	排气管密封垫	1	
3	GB/T 6177 M6-A2-70-304	M6 Nut	M6法兰螺母	2	

前后泥板: FRONT&REAR FENDER



1	53110-14A00	Front Fender (Cr)	前挡泥板	1	
2	53121-14A00	Rear Part, Front Fender	前挡泥板后部	1	
3	53122-14A00	Underboarding	衬板	1	
4	GB/T16674 M6X10-Zn.DJ	M6x10 Flange Bolt	M6x10法兰螺栓	3	
5	58620-16H00	Cable Clamp	线夹	2	
6	GB/T 820 M5X10-Zn.DJ	Scrw	十字槽半沉头螺钉	1	
7	GB 5783 M6X12-Zn.DJ	M6x12 Bolt	M6x12六角螺栓	4	
8	GB/T 859 6-Zn.DJ	ø6 Spring Washer	ø6弹垫圈	4	
9	GB 97.1 6-140HV-Zn.DJ	ø6 Flat Washer	ø6平垫圈	4	



1	63110-14A00	Rear Fender	后泥板	1	
2	GB/T16674 M6X12-Zn.DJ	M6X12 Flange Bolt	M6X12法兰螺栓	4	
3	63112-14A00	Rear Part, Rear Fender	后尾罩	1	
4	34120-10A00	Rubber Ring	缓冲胶圈	3	
5	44415-15A00	Bushing	衬套	3	
6	GB/T16674 M6X25-Zn.DJ	Bolt	M6x25法兰螺栓	3	
7	GB/T 96 6-Zn.DJ	ø6 Washer	ø6大平垫	1	
8	GB/T 6187.1 M6-Zn.DJ	Flange Nut	M6法兰自锁螺母	3	
9	45530-Y1000	Bracket, Licence Plate	后牌照支架	1	
10	GB/T16674 M6X16-Zn.DJ	M6x16 Flange Bolt	M6x16法兰螺栓	2	

油箱/燃油蒸发:FUEL TANK/ FUEL EVAPORATION SYSTEM



1	44110-17H00	Fuel Tank Comp	油箱	1	
2	44131-14A10	Rubber Ring, Front	油箱前部缓冲胶圈	1	
3	44132-14A10	Rubber Ring, Lower	油箱下部缓冲胶圈	2	
4	44222-14A00	Fuel Tank Cap	油箱盖	1	
5	34810-21G00	Fuel Level Gauge	油位计	1	
6	G1000-4080P	Hose	燃油管	2	
7	GJD00-8010C	Clip	油管夹	4	
8	GB/T16674 M6X12-Zn.DJ	M6X12 Bolt	M6X12法兰螺栓	2	

座垫:SEAT



1	45100-17H00	Seat Assy (Color)	座垫总成	1	
2	37611-14A00	Rubber Ring	橡胶圈	1	
3	47411-14A00	Tool Box	工具箱	1	
4	13702-14A00	Band, Tool Kits	工具攀带	1	
5	GB/T16674 M6X20-Zn.DJ	M6x20 Flange Bolt	M6x20法兰螺栓	1	
6	GB/T16674 M8X16-Zn.DJ	M8x16 Flange Bolt	M8x16法兰螺栓	2	

后货架: REAR CARRIER



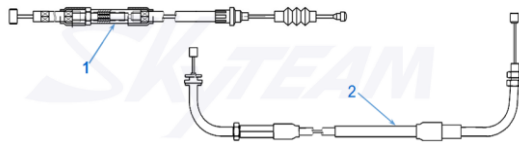
1	46110-14A10	Rear Carrier	后货架	1	
1-1	46110-14A20	Rear Handle	后拉手	1	
2	GB/T 16674 M8X95-Zn.DJ	M8X95 Flange Bolt	M8X95法兰螺栓	2	

后视镜: RERA MIRROR



1	56500/56600-14A00	Rearview Mirror Assy	后视镜总成	1	
---	-------------------	----------------------	-------	---	--

操纵线: CABLES



1	58400-14A00	Clutch Cable Assy	离合器钢索	1	
2	58300-15A00	Throttle Cable	油门钢索	1	

贴花: STICKERS



1	89012-14A20	Emblem	车身贴花	2	
2	89081-14A10	Emblem	车身贴花	2	
3	89011-14A00	Model Decal	50型号贴花	2	
4	89085-14A00	5.5L Sticker	5.5L贴花	2	

REMARK: THE PARTS MARKED IN RED ARE THE ONES WE CANNOT SUPPLY SEPARATELY.
THANKS FOR UNDERSTANDING!